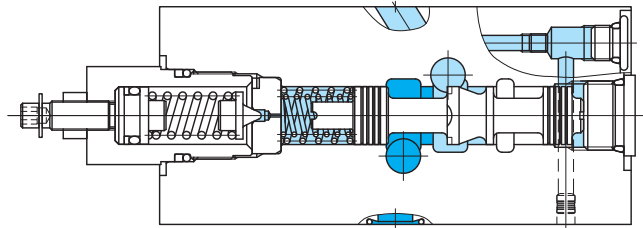
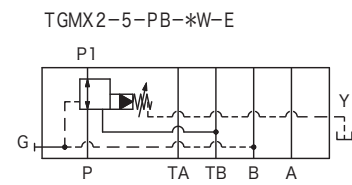
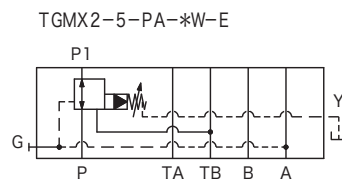
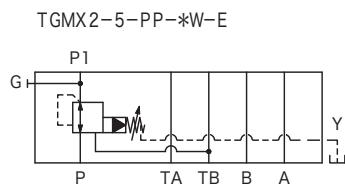
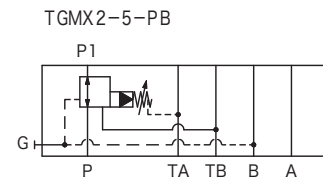
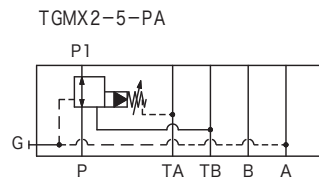
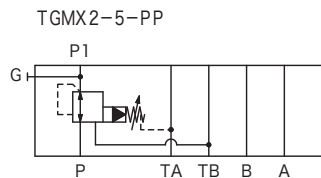


Pressure reducing valves TGMX2-5, 50 series



Functional Symbols



Model Code

(F3)-TGMX2-5-P*-*W-(E)-G-50

1 2 3 4 5 6 7 8 9 10

- 1 Hydraulic fluid
Omit: mineral oil based fluid, water-glycol based fluid
F3: phosphate ester
- 2 Pressure reducing valve
- 3 Mounting dimensions
5: ISO 4401-05
- 4 Control port
P: P port
- 5 Pilot line
P: P line
A: A line
B: B line
- 6 Pressure adjustment range
A: (0.2)~5 MPa
B: (0.85)~10 MPa
F: (0.85)~20 MPa
G: (0.85)~31.5 MPa
(The minimum pressure differs depending on the flow. Refer to the characteristics curves.)

- 7 Adjuster
W: hex socket adjustment screw
H: knob
- 8 Drain
Omit: valve internal TA line drain (internal drain)
E: external drain
- 9 Pipe connection
For gauge port (G) or external drain port (Y)
G: G 1/8 O-ring seal (for all models)
- 10 Design no.

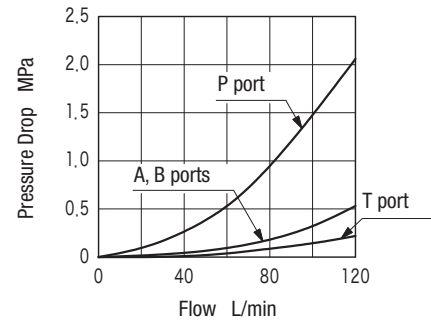
Specifications

- Max. Working Pressure: 31.5 MPa
* (Pressure adjustment range "A": primary pressure 7 MPa, secondary pressure 5 MPa)
 - Max. Flow: 120 L/min
 - Max. Pilot Flow (*1): 420 cm³/min
 - Max. Leakage (*2): 200 cm³/min
- Conditions:
 (*1) Setting pressure 31.5 MPa (20 mm²/s, 50°C)
 (*2) Setting pressure 31.5 MPa, primary side pressure 25 MPa (20 mm²/s, 50°C)

Characteristics Curve (at 20 mm²/s, 50°C) (typical examples)

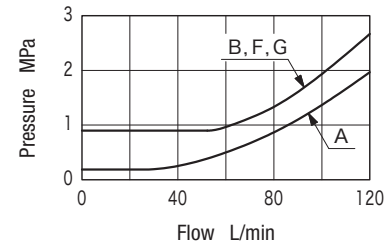
■ Pressure Drop Characteristics

- Indicates pressure loss at each port.
- "P port" curve is for spool in valve fully opened.



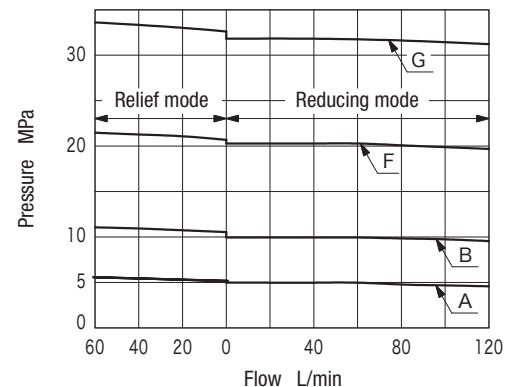
■ Minimum Setting Pressure

- Indicates min. setting pressure over working flow, regardless of primary pressure.
- In areas below the curves, flow forces acting on spool may cause valve to function abnormally.



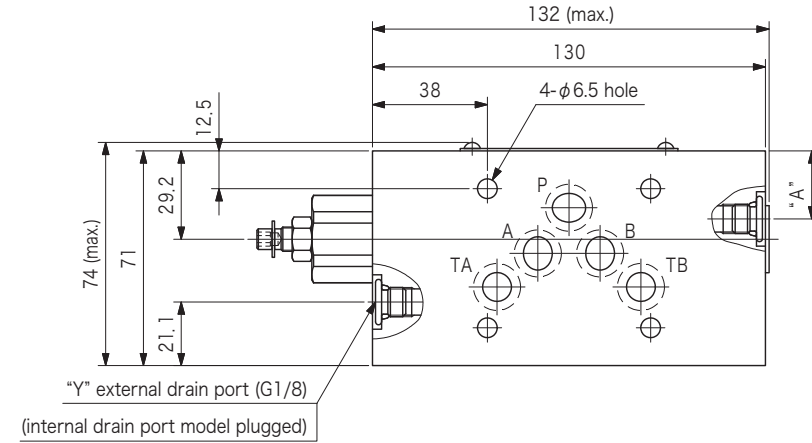
■ Pressure Override Characteristics

- Curve for each pressure adjustment range at max. pressure setting.
- If secondary pressure exceeds setting pressure, valve will function in relief mode as shown in the figure.
- For characteristics of system, drain back pressure (TA line, or Y port line for E type) is added in reducing mode, and tank back pressure (TB line) and drain back pressure are added in relief mode.

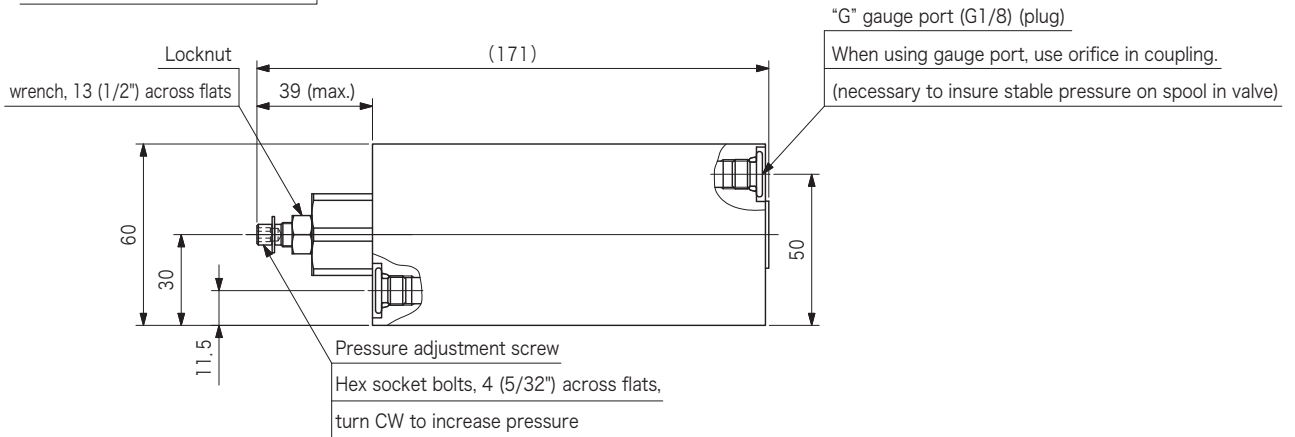


Dimensions

TGMX2-5-P*-W-(E)-G-50 (reducing valve) Weight: 3.5 kg

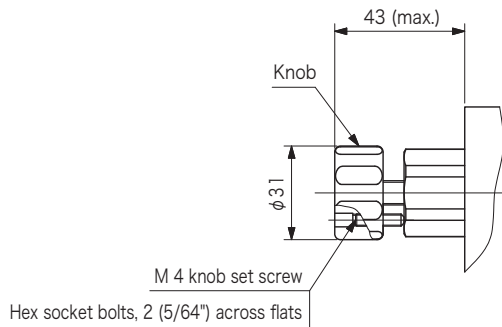


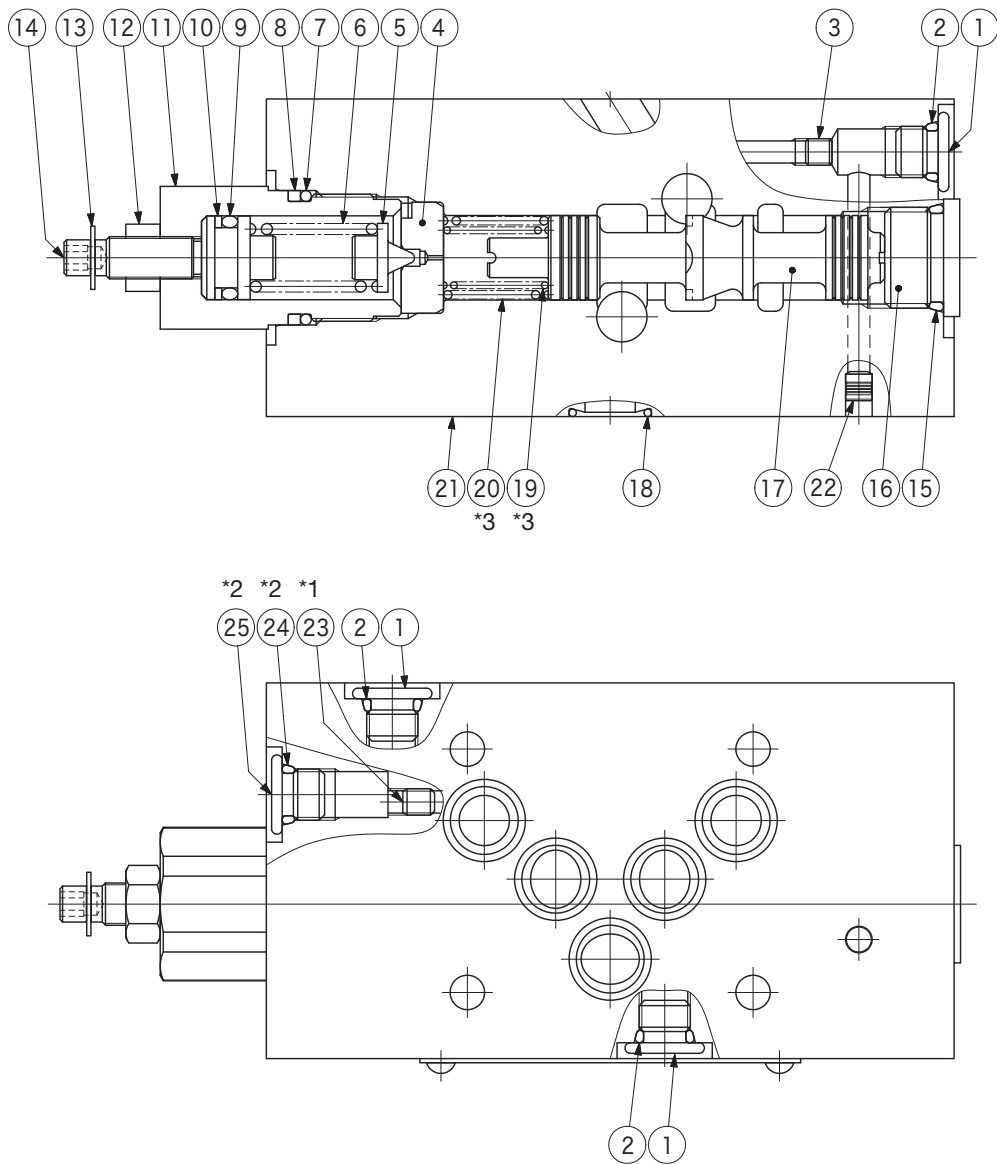
Model Code	"A"
TGMX2-5-PP	22.5
TGMX2-5-PA TGMX2-5-PB	29.2



Pressure Adjuster

"H" Type Weight: +0.1 kg (compared to W type)





Note: *1 (23) used for external drain model (-E) only.

*2 (24)(25) not used for external drain model (-E).

*3 (19)(20) parts differ for press. adj. ranges A and B, F, G.

No.	Name	Part No.	Standard	Qty
2	O-ring	008000619	JIS B 2401-1B-P8	4
7	O-ring	007911717	AS568-117 (NBR, Hs70)	1
8	Backup ring	40025061	MS28774-117	1
9	O-ring	007911117	AS568-111 (NBR, Hs70)	1
10	Backup ring	40025057	MS28774-111	1
15	O-ring	007990819	AS568-908 (NBR, Hs90)	1
18	O-ring	007901419	AS568-014 (NBR, Hs90)	5
24	O-ring	008000619	JIS B 2401-1B-P8	1 or 0

⑥ Spring

Code	Part No.
A	40025063
B	40025064
F	40025065
G	40025066